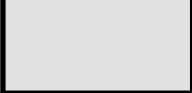



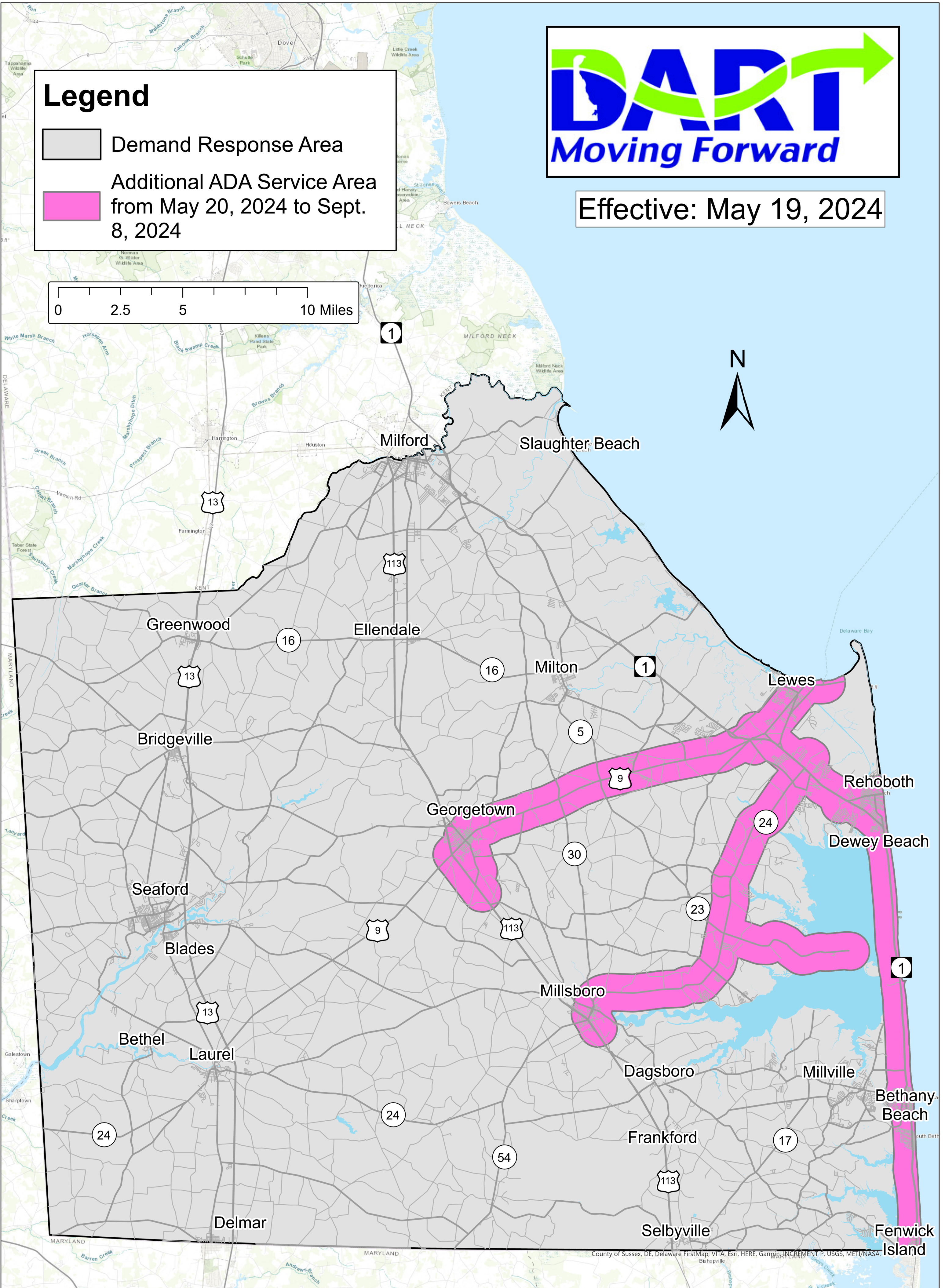
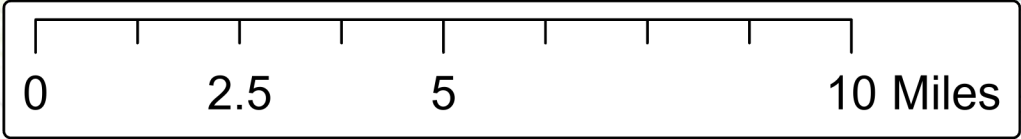
May 2024: Sussex County Saturday ADA Service Area



Effective: May 19, 2024

Legend

-  Demand Response Area
-  Additional ADA Service Area from May 20, 2024 to Sept. 8, 2024



County of Sussex, DE, Delaware FirstMap, VITA, Esri, HERE, Garmin, INCREMENT P, USGS, METI/NASA