

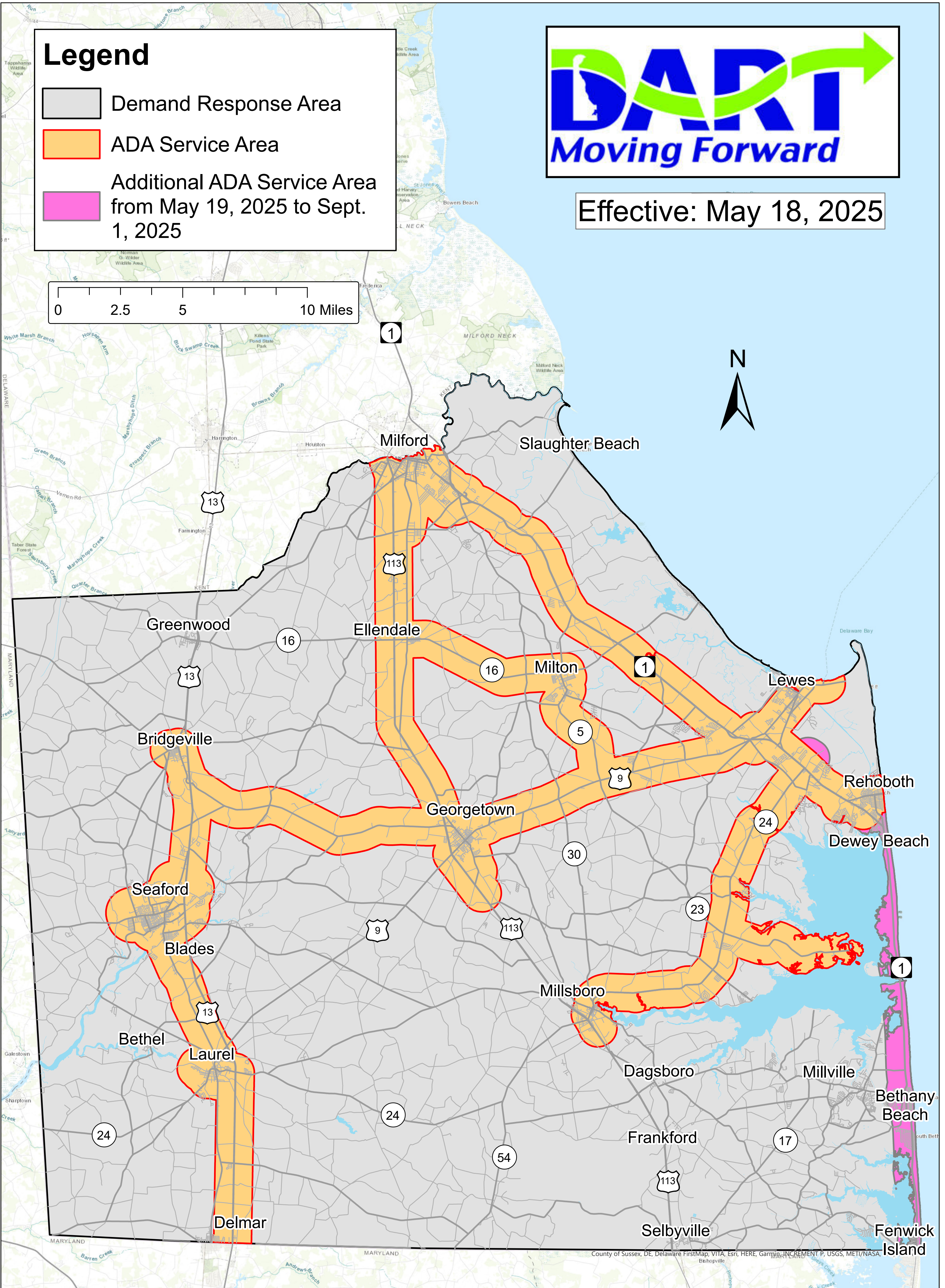
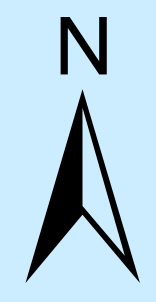
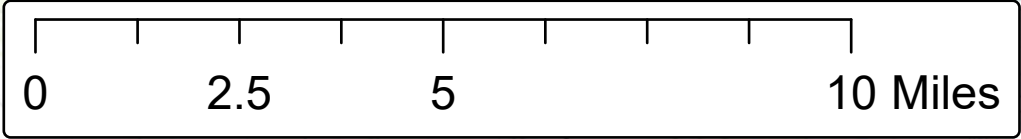
May 2025: Sussex County Weekday ADA Service Area



Effective: May 18, 2025

Legend

- Demand Response Area
- ADA Service Area
- Additional ADA Service Area from May 19, 2025 to Sept. 1, 2025



County of Sussex, DE, Delaware FirstMap, VITA, Esri, HERE, Garmin, INCREMENT P, USGS, METI/NASA